

2025

NEW
PROMOTIONAL
PRODUCTS



 *Collection*

CrisMa®

Ferraghini®

MARK®
TWAIN



Ferraghini® ⓘ BIG BLACK REFILL ⚡ EXPRESS

F263

Ferraghini metal twist action pen

Elegant twist action biros from the Ferraghini brand made of metal with silver applications and a large capacity refill that writes in black. We will engrave your logo on the opposite side of the Ferraghini logo.

✂ 1,2 × 14,3 cm | ☒ L2 3 × 0,6 | ☐ K



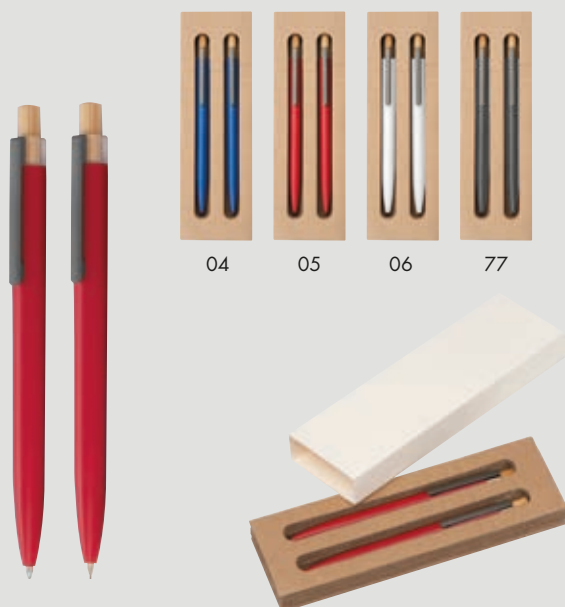
ⓘ BLUE REFILL ⚡ EXPRESS

14453

Bamboo pen with twist in bamboo case

Bamboo ball pen with twist action and a blue-writing Crosssystem refill. Supplied in a matching bamboo case. We will engrave your logo on the biros.

✂ 16,8 × 4 × 2,4 cm | ☒ L2 3 × 0,6 | ☐ KS



♻ RECYCLED ⓘ BLUE REFILL ⚡ EXPRESS

14426

Writing set with pen and mechanical pencil made from recycled aluminium

Writing set consisting of a biro with blue-writing semi-gel refill and a mechanical pencil made of recycled aluminium, with metal clip and bamboo pusher in an environmentally friendly box. Your logo will be engraved on both writing instruments to the right of the clip. (Engraving price for both writing instruments)

✂ 17,7 × 5,8 × 2,1 cm | ☒ L6 4 × 0,6 | ☐ KS



♻ RECYCLED ⓘ BLUE REFILL ⚡ EXPRESS

14706

Writing set with pen and rollerball made from recycled aluminium

Writing set consisting of a biro with blue writing semi-gel refill and a rollerball made of recycled aluminium, with metal clip and bamboo pusher in an environmentally friendly box. Your logo will be engraved on both writing instruments to the right of the clip. (Engraving price for both writing instruments)

✂ 17,8 × 5,8 × 2,2 cm | ☒ L6 4 × 0,6 | ☐ KS

6 x PROMOTION



03

04

07

♻️ RECYCLED ⓘ BIG BLUE REFILL ⚡ EXPRESS

15245

Recycled aluminium pen incl. bamboo window

Recycled aluminium ballpen with black metal clip, blue refill, bamboo pusher and bamboo window at the height of the clip. We engrave your logo in the bamboo window.

✂️ ø 1 x 14,7 cm | 📏 L1 3,5 x 0,6 | 🏠 P



CrisMa ⓘ BIG BLUE REFILL ⚡ EXPRESS

15165

CrisMa twist action pen made of stainless steel

Black stainless steel twist action biros in matt design and large capacity refill with blue ink. Your logo is engraved to the right of the clip.

✂️ ø 1 x 14 cm | 📏 L2 3,5 x 0,6 | 🏠 KS



CrisMa ⓘ BIG BLUE REFILL ⚡ EXPRESS

14991

CrisMa stainless steel pen

Twist action biros made of metal and rubberised surface in a classic design with a large capacity refill that writes in blue. The biros is supplied in a black case. Your logo will be engraved on the biros.

✂️ ø 1,1 x 14 cm | 📏 L2 3 x 0,6 | 🏠 K



CrisMa ⓘ BIG BLUE REFILL ⚡ EXPRESS

15127

CrisMa twist action pen made of stainless steel, matt grey

Grey stainless steel twist action biros in matt design with black applications and blue writing large capacity refill. Your logo is engraved to the right of the clip.

✂️ ø 1 x 14,5 cm | 📏 L2 3 x 0,6 | 🏠 KS



03 04 05 06 08 09 10 11 12 14 24 29 44

♻️ RECYCLED ⓘ BLUE REFILL ⚡ EXPRESS

15178

pen made from recycled aluminium with bamboo pusher

Recycled aluminium biros with bamboo pusher, metal clip and large capacity refill with blue ink. Your logo is engraved to the right of the clip.

✂️ 1 × 14,2 cm | 📏 L1 4 × 0,6 | 🏠 P



03 04 05 06 09

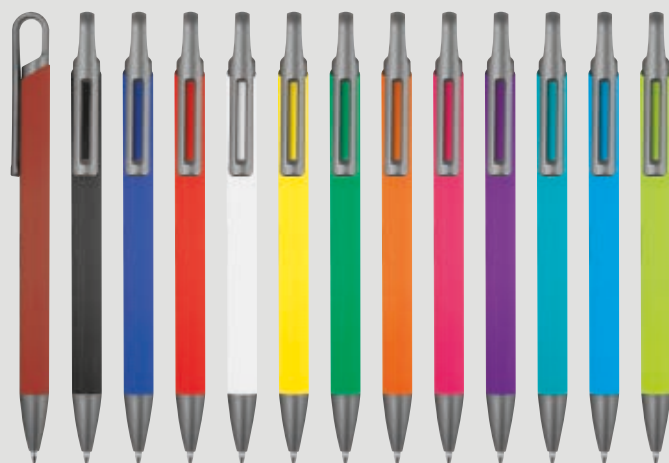
♻️ RECYCLED ⓘ BLUE REFILL ⚡ EXPRESS

14469

Recycled aluminium pen

Ballpen in slim shape made of recycled aluminium, with blue refill and three decorative rings. We engrave your logo next to the clip.

✂️ 0,8 × 14,2 cm | 📏 L1 4 × 0,5 | 🏠 P



02 03 04 05 06 08 09 10 11 12 14 24 29

♻️ RECYCLED ⓘ BLUE REFILL ⚡ EXPRESS

14440

Semi gel pen

Rubberised Soft Touch ball pen made from recycled aluminium and blue semi-gel refill. With a line width of 0.5 mm, you have a thin yet soft writing style. We will engrave your logo to the right of the clip.

✂️ 1 × 14,6 cm | 📏 L1 4 × 0,6 | 🏠 P



04 05 06 07 08 09 10 11 29

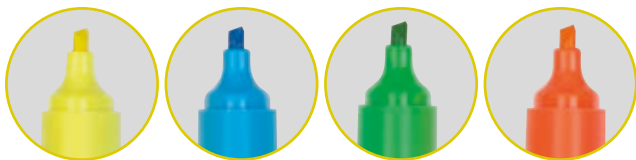
♻️ RECYCLED ⓘ BIG BLUE REFILL

14989

pen made from recycled plastic

Retractable biros made of recycled plastic with coloured applications and large capacity refill that writes in blue. Your logo is printed to the right of the clip.

✂️ 1 × 14,3 cm | 📏 T1 4 × 0,6 | 🏠 N



24721

Mini highlighter set

Highlighter set consisting of 4 different colours (yellow, blue, green and orange), packed in a cardboard box. Ideal for the desk or book bag. We will print your logo on the box.

✂ 7 x 1,8 x 7,2 cm | ☒ T2 4 x 2 | ☐ K



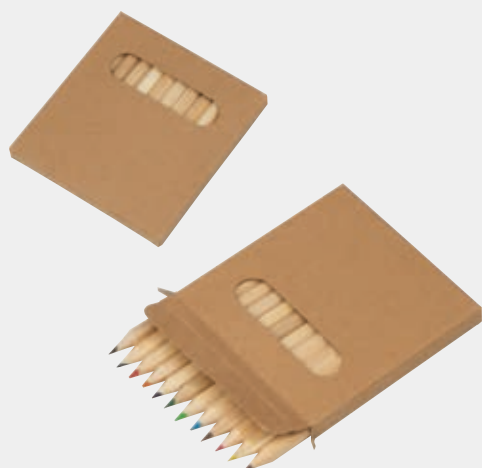
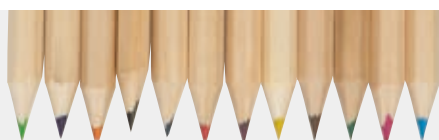
14464

Wax crayon set

6-piece wax crayon set in paper packaging. We will print your logo on the packaging.

✂ 5,1 x 0,9 x 9,1 cm | ☒ T2 3 x 4 | ☐ K

NEW ITEMS



14459

coloured pencil set 12 piece

12-piece coloured pencil set in paper packaging. Perfectly organised and always ready to hand. We print your logo below the recess.

✂ 8,7 x 0,9 x 9 cm | ☒ T2 5 x 3 | ☐ K



14454

12 piece coloured pencil set

Practical coloured pencil set in a cylindrical paper storage box. With 12 different colours, there are no limits to your imagination. We will print your logo on the box.

✂ 3,5 x 10,3 cm | ☒ T2 4 x 1 | ☐ N



60
LINED PAGES

24471

Sticky note set with spiral pad

Sticky note set with different sticky markers and notes (25 sheets each), ruler edge in spiral notepad (80 lined pages). We print your logo on the transparent cover.

✂ 13,6 × 7,2 × 1,3 cm | 📏 T2 5 × 3 | 📦 KS



120
LINED PAGES

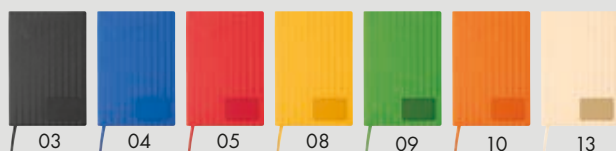
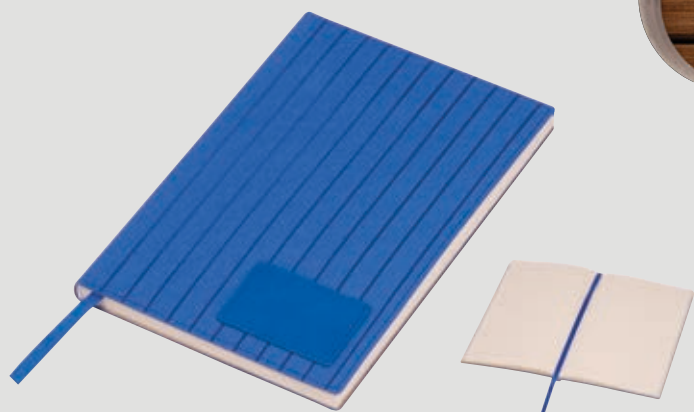
♻ RECYCLED

24478

B7 notebook made from recycled paper

B7 notebook made from recycled paper with 120 lined pages, grammage 70g/m². Your logo is printed on the outside of the cover.

✂ 8,8 × 1 × 12,5 cm | 📏 T2 5 × 3 | 📦 KS



96
LINED PAGES

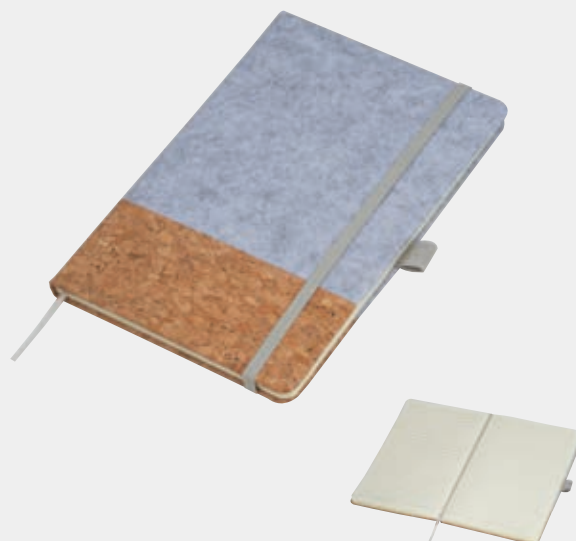
📄 A5

24980

A5 PU soft cover notebook

A5 notebook with a soft cover made of PU with a ribbed structure and 96 lined pages made of sugar cane. Your logo will be printed at the bottom right of the cover in the space provided.

✂ 14,3 × 1,2 × 21 cm | 📏 T3 2,5 × 4,5 | 📦 KS



120
LINED PAGES

♻ RECYCLED ♻ RPET 📄 A5

24472

A5 notebook out of cork and felt

A5 notebook made of RPET felt and cork with 160 lined pages, rubber closing strap and biros loop. We will print your logo message on the felt surface.

✂ 14,6 × 1,3 × 21,1 cm | 📏 TT1 10 × 10 | 📦 KS



160
LINED PAGES

RECYCLED A5

24765

Notebook with a cover made from recycled milk carton and magnetic closure

Notebook with a cover made from recycled milk carton, a magnetic closure made from cork and 160 lined pages made from sugar cane, ribbon marker and biro loop. Your logo is printed on the cover.

15,2 × 1,8 × 21,1 cm | 13 5 × 3 | KS



03



77



95



192
LINED PAGES

A5 PEN INCLUDED
RECYCLED LEATHER

24763

CrisMa Set of leather notebook and pen

CrisMa Set consisting of a recycled leather notebook with 192 lined pages and a matching colour biro with large capacity refill. We will print your logo on the notebook.

19,5 × 3 × 24,2 cm | 15 5 × 10 | KS



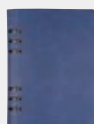
03



07



44



200
LINED PAGES

A5

25253

A5 ring binder with PU cover

A5 ring binder with PU cover with 200 lined pages made of sugar cane and a small elastic ballpoint pen loop. We will print your logo on the cover.

16,7 × 2 × 23 cm | 11 10 × 10 | K



160
LINED PAGES

A5 REAL LEATHER

24777

CrisMa notebook A5 with lined pages

A5 real leather notebook with 160 lined pages, ribbon marker and an elasticated loop, e.g. for a pen or USB/eraser. We will print your logo on the leather cover.

15,2 × 2 × 22 cm | 16 6 × 6 | KS



A4 ⚡ EXPRESS

24481

A4 clipboard made of bamboo

A4 clipboard made of bamboo with sturdy metal clip to secure your documents. We engrave your logo on the bamboo surface.

✂ 22,4 × 0,4 × 32,5 cm | 📐 L3 8 × 5 | 🏠 KS



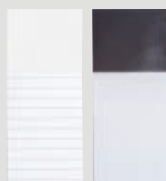
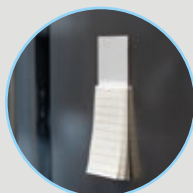
📌 TYPE C CABLE INCL.

35183

Table fan with rechargeable battery

Table fan with rechargeable battery (500 mAh capacity) and type C charging cable. We will print your logo in the lower section.

✂ 9,9 × 3,3 × 12,5 cm | 📐 T4 3,5 × 2 | 🏠 K

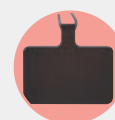
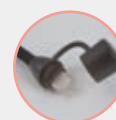
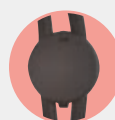


24916

Fridge magnet with sticky notes

Practical fridge magnet with integrated writing pad with 40 lined pages for shopping lists, appointments etc. We will print your logo on the magnet.

✂ 5,9 × 0,4 × 14 cm | 📐 T2 4 × 4 | 🏠 N



34984

Type-C charging cable lanyard

Plastic lanyard with Type C charging cable (In & Out). Your logo will be printed on the label.

✂ 85 × 1 cm | 📐 T3 1,5 × 1,5 | 🏠 KS



34779

magnetic quick-charging cable

Magnetic quick-charging cable made from recycled aluminium. The powerful 60W output allows smartphones or tablets to be charged quickly and the magnets in the cable ensure that it is always perfectly wound up. We engrave your logo on the aluminium surface.

✂ 100 × 1,6 × 0,8 cm | ☒ L2 3 × 1 | ☐ K

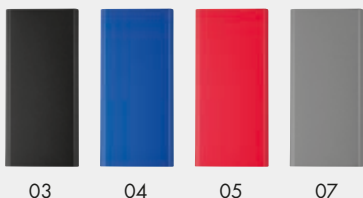


34945

Charging cable with a light function

3-in-1 charging cable with a light function in the middle and a length of 120cm. The charging cable has a USB-C, micro-USB and iOS output and a USB type A and C input. We engrave your logo on the round plate, the engraving lights up during the charging process.

✂ 120 × 3,5 × 0,9 cm | ☒ L2 Ø 3 | ☐ K



34503

powerbank made from recycled aluminium 10.000 mAh

Powerbank made from recycled aluminium with a capacity of 10,000 mAh, LCD display and charging cable. This power bank has 2 USB ports and a Type C input. We engrave your logo onto the housing.

✂ 14,2 × 6,5 × 1,6 cm | ☒ L2 5 × 5 | ☐ K



☞ WIRELESS CHARGING ⓘ TYPE C CABLE INCL.

35247

3 in 1 wireless charger

Practical 3 in 1 wireless charger with which you can easily charge 3 devices at the same time (mobile phone, headphones and smart watch). We print your logo on the back.

✂ 25 × 0,6 × 7,5 cm | ☒ DC2 4 × 4 | ☐ K



📶 BLUETOOTH
 🔌 CABLE INCLUDED
 💡 LED

35244

Speaker with LED light, round

Bluetooth speaker (version 5.3) in round shape with 800mAh battery power (5V) with RGB LED light and charging cable. USB/Type-C connection, SD card slot and small carrying strap. We engrave your logo on the rubberised surface.

📏 $8,2 \times 11,5 \text{ cm}$ |
 📐 $L3 \text{ 2} \times 1$ |
 🏠 K



📶 BLUETOOTH
 🔌 CABLE INCLUDED
 💡 LED

35243

Speaker with LED light

Bluetooth speaker (version 5.4) with 600mAh battery power (5V) with RGB LED light and charging cable. USB/Type-C port, SD card slot and small carrying strap. Your logo will be printed on the back-side.

📏 $14,5 \times 3,6 \times 7,9 \text{ cm}$ |
 📐 $DC2 \text{ 10} \times 3$ |
 🏠 K



35249

ChrisMa bluetooth headphones with rechargeable case

Bluetooth in-ear headphones (40mAh) with rechargeable case (500mAh). When charged, they have a playing time of up to 6 hours. Bluetooth version 5.4. We will print your logo on the case.

📏 $5,2 \times 4,8 \times 3 \text{ cm}$ |
 📐 $T3 \text{ 2,5} \times 2$ |
 🏠 fehlt



35252

Over-ear headphones

Bluetooth over-ear headphones (200mAh, 3.7V) with noise cancellation function, very comfortable to wear and rechargeable battery. Adjustable size, play time of up to 8 hours when fully charged. Bluetooth version 5.4. We print your logo on one side.

📏 $17 \times 7,5 \times 20,5 \text{ cm}$ |
 📐 $T4 \text{ 3,5}$ |
 🏠 K



 AUTOMATIC OPEN

44986

Automatic umbrella

Automatic umbrella made of 190T pongee with fibreglass shaft and matt soft handle. We print your logo on one segment.

✂ 103 × 84 cm | ☒ 52 20 × 15 | ☐ N



74520

7-piece manicure set in a case

High-quality leather manicure case with stainless steel cutlery and diamond nail file, 7 pieces. Your logo will be printed on the front.

✂ 11 × 6,2 × 2 cm | ☒ T3 4 × 2,5 | ☐ K



74792

Sleep- and eyemask

Sleep and eye mask with a skin-friendly cotton inner surface and a recycled polyester outer surface. Breathable and comfortable, the perfect companion for travelling or a restful night's sleep. Fits all head sizes thanks to the elasticated band. Hand wash recommended. We will print your logo on the outside of the mask.

✂ 18,5 × 0,5 × 10 cm | ☒ TT1 10 × 5 | ☐ KS





64543

Non woven garment cover

Large, hard-wearing garment bag made of non-woven fabric with carrying handle and zip. Opening at the top for the clothes hanger. We will print your logo on the front.

✂ 60,5 × 0,3 × 101 cm | ☒ S1 20 × 20 | ☒ N



94938

Faux leather luggage tag

Luggage tag made of water-repellent PU material, belt loop for fastening and address field window that can be closed with a press stud. We print your logo on the address field window.

✂ 6,5 × 0,3 × 10,5 cm | ☒ T3 4 × 3 | ☒ N



65233

CrisMa weekender

Large weekender made of water-repellent PU material and side zip compartment. Can be used as a sports or travelling bag. We will print your logo in the centre below the zip.

✂ 30 × 52 cm | ☒ S2 10 × 10 | ☒ N



CrisMa®

65234

CrisMa Crossbody shoulder bag

Shoulder bag in a modern crossbody format made from water-repellent PU material with practical zips. The perfect everyday companion. We will print your logo on the front.

✂ 18,5 × 5,5 × 46 cm | ☒ S2 12 × 10 | ☒ N



CrisMa  LAPTOP

65229

CrisMa backpack

Large backpack made of PU with plenty of storage space and a tablet compartment inside. Shiny black zips, two side nets as drink holders, an anti-theft compartment and padded shoulder straps. We will print your logo on the front.

✂ 34 × 16 × 46 cm | ☒ S2 15 × 10 | ☐ N



CrisMa

65228

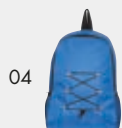
CrisMa backpack with slanted zip

Backpack made of imitation leather with two slanted, shiny black zips on the front, carrying loop, two comfortable shoulder straps and an anti-theft compartment. Your logo will be printed on the front.

✂ 30 × 11 × 42,5 cm | ☒ S2 15 × 10 | ☐ N



03



04



05



06



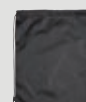
 RPET  RECYCLED

64690

Backpack made of recycled polyester

Backpack made of 600D recycled polyester with hanging loop, two side mesh pockets and two padded shoulder straps. Your advertising is printed on the front of the rucksack.

✂ 29 × 11,5 × 42 cm | ☒ TT2 10 × 10 | ☐ N



03



09



04



10



05



11



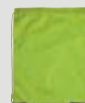
06



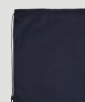
12



08



29



44

64700

Gymbag made of recycled polyester

Gymbag made of 210D recycled polyester with 2 side cords as carrying straps. There are countless possible uses, e.g. as a gym bag or laundry bag. We will print your logo on one side.

✂ 32 × 0,3 × 43 cm | ☒ S1 24 × 24 | ☐ N



64521

Fairtrade cotton bag

Fairtrade cotton bag (140 g/m²) with long handles and Fairtrade label. We print your logo on one side.

✂ 38 × 0,2 × 42,3 cm | 📐 ST 26 × 27 | 🌱 N



03

05

06



29



44



♻ RECYCLED



64698

Cotton bag with long handles made from recycled cotton and RPET

Cotton bag made of 75% recycled cotton and 25% RPET with long handles and a particularly strong grammage of 180g/m². Your logo is printed on one side.

✂ 38 × 0,4 × 42,2 cm | 📐 ST 26 × 27 | 🌱 N



02

03

04

05



06

08

09

10



11

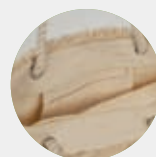
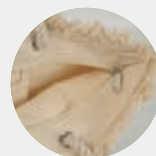
24

29

44



77



64572

Oeko-Tex ® beach bag natural with jute bottom and cord

Oeko-Tex ® beach bag made of structured cotton in natural colour with jute bottom and drawstring handle. Perfect for a visit to the beach or outdoor pool. The logo is printed on one side.

✂ 48 × 15,5 × 37,5 cm | 📐 S1 20 × 20 | 🌱 N



♻️ RECYCLED ♻️ RPET

65250

RPET shopping bag RP

This shopping bag (140 g/m²) with long handles is made from recycled plastic. The logo is printed on one side.

✂️ 38 × 0,3 × 42,5 cm | 📐 51 23 × 23 | 🏠 N



♻️ RECYCLED ♻️ RPET

65251

RPET shopping bag RP

This shopping bag (140 g/m²) with long handles is made from recycled plastic. The logo is printed on one side.

✂️ 38 × 0,3 × 42,5 cm | 📐 51 23 × 23 | 🏠 N



♻️ RECYCLED

65198

Large carrier bag made from recycled cotton

Sturdy large carrier bag (730 g/m²) made of recycled cotton with two coloured long handles and sturdy bottom gusset. Versatile use e.g. shopping, beach, etc. Practical slit pocket on the front. We will print your logo on the front pocket.

✂️ 58 × 20 × 34 cm | 📐 TT2 15 × 15 | 🏠 N



♻️ RECYCLED

65199

Small carrier bag made from recycled cotton

Small carrier bag (730 g/m²) made of recycled cotton with two coloured long handles and sturdy bottom gusset. Versatile use e.g. shopping, beach, etc. Practical slit pocket on the front. We will print your logo on the front pocket.

✂️ 37 × 14 × 24 cm | 📐 TT2 10 × 10 | 🏠 N



04



05



44



65218

Canvas shopper with long handles

Carrier bag made of robust and sustainable canvas fabric (320 g/m²) with long handles and stable bottom gusset for a secure stand. Small insert pocket on the front in matching colours to the handles. Your logo will be printed on the pocket.

✂ 35 × 13 × 38 cm | ☒ TT2 15 × 15 | ☐ N



XXL

54574

XXL beach ball sea look

XXL beach ball made of PVC in a great sea look with a diameter of 70cm when inflated. Your logo is placed in the centre of a white segment.

✂ ø 70 cm | ☒ S1 20 × 10 | ☐ N



64744

Waterproof messenger bag

Waterproof, lockable bag with practical plastic carabiner for fastening purposes and a capacity of 10 litres. Your logo is printed on the transparent side.

✂ 32 × 18,5 × 45 cm | ☒ S2 15 × 10 | ☐ N



55254

Inflatable swan

Inflatable swimming toy in the shape of a golden swan with 2 handles. We will print your logo on the seat.

✂ 150 × 150 × 120 cm | ☒ S2 20 × 8 | ☐ P

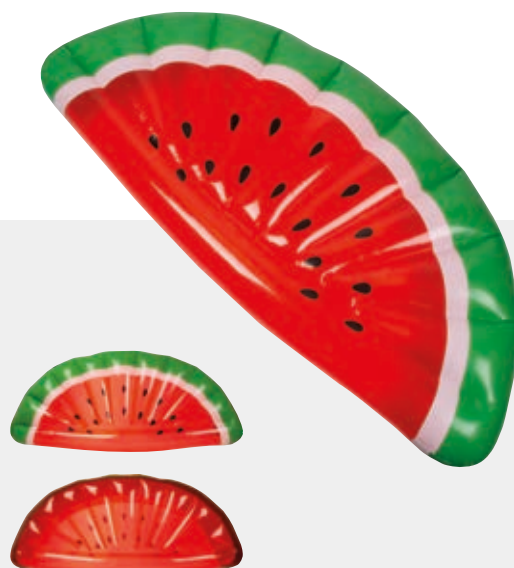


55256

Inflatable pineapple

Inflatable air mattress in the shape of a pineapple. We will print your logo on one spot.

✂ 83 × 16 × 185 cm | ☒ S2 15 × 6 | ☐ P



55255

Inflatable watermelon

Inflatable mattress in the shape of a watermelon. We will print your logo on one spot.

✂ 170 × 18 × 75 cm | ☒ S2 15 × 6 | ☐ P



55257

Inflatable donut

Inflatable swimming ring in the shape of a donut. We will print your logo on one spot.

✂ 100 × 23 cm | ☒ S2 20 × 8 | ☐ P

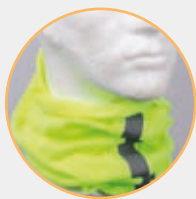


55258

Inflatable ice cream cone

Inflatable air mattress in the shape of an ice cream cone, 105x18x215 cm. We will print your logo on one spot.

✂ 105 × 18 × 215 cm | ☒ S2 20 × 8 | ☐ P



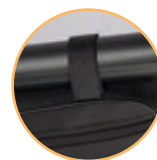
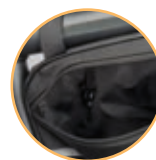
① REFLECTIVE

94944

Bandana loop scarf with reflective stripes

Fashionable loop scarf made of polyester (120 g/m²) in the shape of a circle and without ends with practical reflective strips. Easy to use as it can be quickly pulled over the head. No need to constantly rewrap and fasten. We print your logo on the scarf.

✂ 47 × 25 cm | ☒ TT2 8 × 8 | ☐ N



62684

Bicycle bag

Bicycle bag made of durable 600D polyester with reflective strips. The bag can be easily attached to the middle frame bar using the brackets and offers enough space for all important items. We will print your logo on the bag.

✂ 30 × 7,5 × 19 cm | ☒ TT1 8 × 3 | ☐ N



54591

Beach volleyball

Beach volleyball in white, yellow and blue. We print your logo on a white field.

✂ ø 17 cm | ☒ TT2 5 × 3 | ☐ N

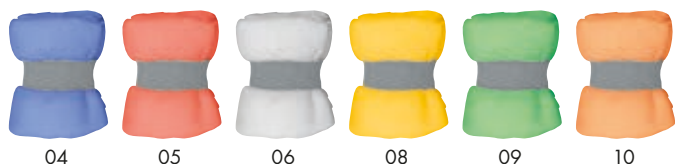


54592

Basketball

Basketball in size 7 with hard-wearing surface. We print your logo on the smooth segment without structure.

✂ ø 20 cm | ☒ TT2 8 × 4 | ☐ N



74754

Microfibre towel with elastic band

Microfibre towel (90 x 40 cm) with elastic band and a grammage of 160 g/m². Your logo will be embroidered on the towel.

✂ 90 x 40 cm | 📏 HF 8 x 5 | 🏠 N



54703

Kaleidoscope

This children's toy is reminiscent of a telescope. When you look through it, you see fantastic images created by the reflection of small, coloured plastic stones. If you turn the kaleidoscope, these images change. The imagery of a kaleidoscope, its symbolism and metaphors, are an art form that enchants the senses and liberates the mind. We will print your logo on the shaft of the item.

✂ 3,5 x 14,6 cm | 📏 T2 4 x 1 | 🏠 N



⚡ EXPRESS 🔒 LEAKPROOF

📏 350 ml 🔥 6h ❄ 9h ⓘ DOUBLE-WALLED 🏠 VACUUM

85106

Stainless steel drinking cup, 350ml

Elegant double-walled vacuum drinking cup made of stainless steel - perfect for travelling. With a capacity of 350ml and a leak-proof lid. We will engrave your logo on the mug.

✂ 8,8 x 14 cm | 📏 L3 4 x 4 | 🏠 K



⚡ EXPRESS 🔒 LEAKPROOF

📏 550 ml 🔥 6h ❄ 9h ⓘ DOUBLE-WALLED 🏠 VACUUM

85239

Stainless steel drinking cup, 550ml

Elegant double-walled vacuum drinking cup made of stainless steel with a capacity of 550ml, a leak-proof screw cap and drinking opening as well as a practical carrying strap. We engrave your logo on the mug.

✂ 8,5 x 19,5 cm | 📏 L3 4 x 4 | 🏠 K



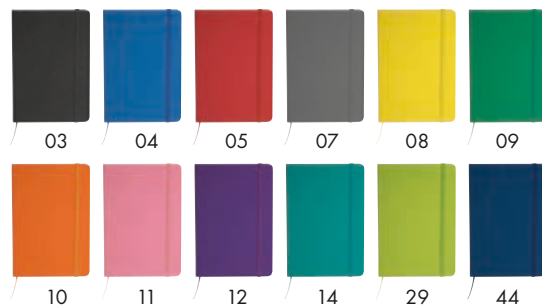
CrisMa 500 ml ⚡ EXPRESS

84949

Copper mug 'Moscow Mule' 500ml

Stainless steel mug with copper coating, golden handle and a capacity of 500ml. Ideal for cocktails or other drinks. We engrave your logo in the centre of the mug.

✂ 8,5 × 9,8 cm | 📐 L3 5 × 5 | 🏠 K



25261

A5 notebook out of recycling paper

A5 notebook with a cover made of recycled PU and 160 lined pages made of recycled paper. We print your logo on the front.

✂ 14,5 × 1,4 × 21,1 cm | 📐 T2 5 × 3 | 🏠 KS



CrisMa 500 ml ⚡ EXPRESS

84947

Copper mug, 500ml

Stainless steel tumbler with copper coating, smooth surface and a capacity of 500ml. Ideal for cocktails or other drinks. We engrave your logo in the centre of the mug.

✂ 8,5 × 9,5 cm | 📐 L3 5 × 5 | 🏠 K



CrisMa 400 ml ⓘ DOUBLE-WALLED ⚡ EXPRESS

85175

CrisMa stainless steel mug, 400ml

Double-walled vacuum drinking cup made of stainless steel with handle and a capacity of 400ml. We engrave your logo in the centre of the mug.

✂ 8,5 × 11 cm | 📐 L3 4 × 4 | 🏠 K



♻️ RECYCLED 📏 480 ml ⓘ DOUBLE-WALLED

84962

Stainless steel drinking cup 350ml

Double-walled drinking cup with a stainless steel interior and a recycled plastic exterior. Filling capacity of 350ml and a leak-proof screw cap with lockable drinking opening. We engrave your logo on the cup.

📏 9,2 × 12,9 cm | 📏 T4 3,5 × 3,5 | 📏 K



📏 1200 ml ⓘ DOUBLE-WALLED 🔥 1h ❄️ 1.5h 🌿 BPA FREE

84686

XXL drinking cup, 1200ml

Double-walled XXL plastic drinking cup with a capacity of 1200ml, practical carrying handle and removable straw in the lid. We print your logo on the cup.

📏 10 × 25 cm | 📏 T4 3,5 × 3,5 | 📏 K

NEW ITEMS



🔌 VACUUM

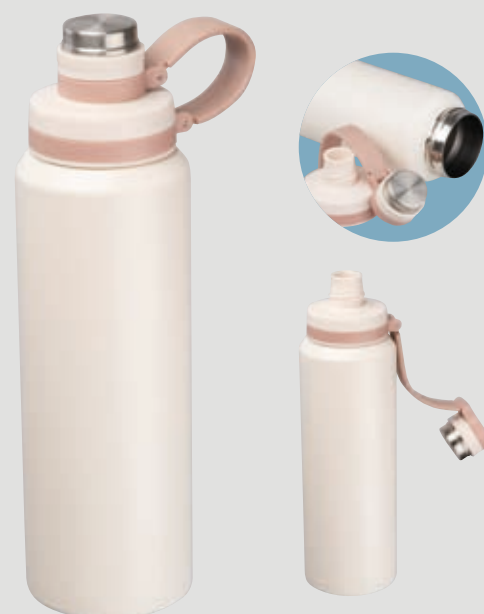
📏 500 ml 🔒 LEAKPROOF ⓘ DOUBLE-WALLED 🎨 DIGITAL PRINT

85259

Sublimation vacuum flask made of stainless steel, 500ml

Double-walled sublimation drinking bottle made of stainless steel with a capacity of 500ml and a carrying handle. Your logo is applied to the bottle by sublimation.

📏 7,1 × 22,5 cm | 📏 SU 18 × 8 | 📏 K



⚡ EXPRESS ⓘ DOUBLE-WALLED

🔌 VACUUM 🔒 LEAKPROOF 📏 800 ml 🔥 8h ❄️ 12h

84814

Vacuum stainless steel drinking bottle, 800ml

Double-walled vacuum stainless steel drinking bottle with a capacity of 800ml. Leak-proof screw cap with integrated carrying strap. We engrave your logo on the bottle.

📏 7,5 × 26,5 cm | 📏 L3 4 × 4 | 📏 K



⚡ EXPRESS 🔥 8h ❄️ 12h

📏 750 ml 🧊 VACUUM 🌀 LEAKPROOF ⓘ DOUBLE-WALLED

84749

Vacuum flask, matt, 750ml with carabiner

Double-walled vacuum drinking bottle made of stainless steel with matt surface and leak-proof screw cap incl. snap hook. Capacity of 750ml. The logo is engraved on the bottle.

📏 7 × 24,5 cm | 📏 L3 4 × 4 | 🏠 K



06 07 09 44 91

CrisMa®

📏 700 ml ♻️ RECYCLED ⚡ EXPRESS

84816

CrisMa stainless steel drinking bottle, 700ml

Leak-proof drinking bottle made from recycled stainless steel with a capacity of 700ml and a lockable screw cap. This bottle is supplied in a black box. Your advertising will be engraved on the bottle.

📏 6,9 × 22 cm | 📏 L3 4 × 4 | 🏠 K



⚡ EXPRESS

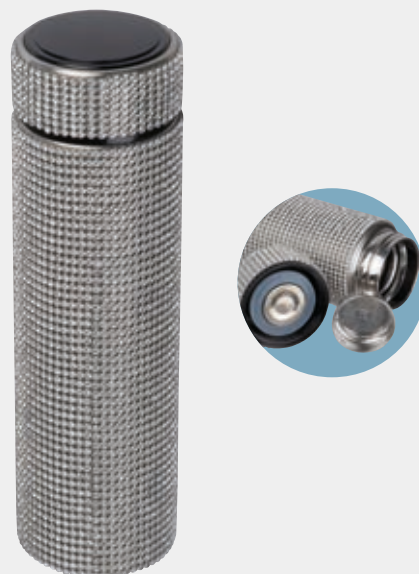
🧊 VACUUM 🌀 LEAKPROOF 📏 350 ml ⓘ DOUBLE-WALLED

85225

Small stainless steel drinking bottle with rhinestone accents

Double-walled vacuum drinking bottle made of stainless steel with sparkling rhinestone accents, a capacity of 350ml, strainer insert and a leak-proof screw cap. We print your logo on the lid.

📏 6,8 × 18,5 cm | 📏 T4 ø 4 | 🏠 K



⚡ EXPRESS

🧊 VACUUM 🌀 LEAKPROOF 📏 500 ml ⓘ DOUBLE-WALLED

85226

Large stainless steel drinking bottle with rhinestone accents

Double-walled vacuum drinking bottle made of stainless steel with sparkling rhinestone accents, a capacity of 500ml, strainer insert and a leak-proof screw cap. We print your logo on the lid.

📏 6,8 × 24 cm | 📏 T4 ø 4 | 🏠 K



06 07 77

⚡ EXPRESS 🔥 8h ❄️ 12h ♻️ RECYCLED

CrisMa® 📏 600 ml 🧊 VACUUM 🌀 LEAKPROOF ⓘ DOUBLE-WALLED

84829

CrisMa vacuum stainless steel drinking bottle, 600ml

Large double-walled vacuum drinking bottle made from recycled stainless steel with a leak-proof cap and a capacity of 600ml. This bottle is supplied in a black box. We engrave your logo on the bottle.

✂️ 7 × 24,7 cm | 📏 L3 4 × 4 | 🏠 K



29 44 77

⚡ EXPRESS 🔥 8h ❄️ 12h

📏 700 ml 🧊 VACUUM 🌀 LEAKPROOF ⓘ DOUBLE-WALLED

84819

Rubberised drinking bottle with loop, 700 ml

Large drinking bottle with rubberised outer coating and 700 ml capacity. The vacuum insulation keeps drinks hot and cold for a long time. Practical lid with screw cap and loop. We will engrave your logo on the outside.

✂️ 7 × 22 cm | 📏 L3 4 × 4 | 🏠 K



⚡ EXPRESS 🔥 8h ❄️ 12h

📏 500 ml 🧊 VACUUM 🌀 LEAKPROOF ⓘ DOUBLE-WALLED

84961

Vacuum stainless steel drinking bottle, 500ml

Double-walled vacuum drinking bottle made of stainless steel with a leak-proof cap, a capacity of 500ml and copper coating. The bottle shimmers in rainbow colours in the light. We engrave your logo on the bottle.

✂️ 5,6 × 7,3 × 21,4 cm | 📏 L3 4 × 4 | 🏠 K



04 05 06 77

⚡ EXPRESS 🔥 8h ❄️ 12h

📏 600 ml 🧊 VACUUM 🌀 LEAKPROOF ⓘ DOUBLE-WALLED

85236

Drinking bottle with carabiner, 600ml

Double-walled vacuum drinking bottle made of stainless steel with a capacity of 600ml, a leak-proof screw cap and a carabiner. We engrave your logo on the bottle.

✂️ 6,5 × 25 cm | 📏 L3 4 × 4 | 🏠 K



750 ml LEAKPROOF EXPRESS

84971

Stainless steel drinking bottle with carabiner, 750ml

Large stainless steel drinking bottle with practical carabiner, a capacity of 750ml and a leak-proof screw cap with bamboo lid. We will engrave your logo on the bottle.

✂ 7,3 × 23,5 cm | ✂ L3 4 × 4 | 田 K



400 ml LEAKPROOF EXPRESS

84972

Stainless steel drinking bottle with carabiner, 400ml

Small stainless steel drinking bottle with practical carabiner, a capacity of 400ml and a leak-proof screw cap with bamboo lid. We engrave your logo on the bottle.

✂ 6,5 × 17 cm | ✂ L3 4 × 4 | 田 K



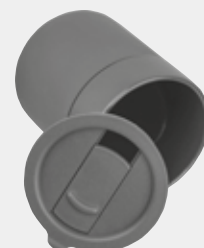
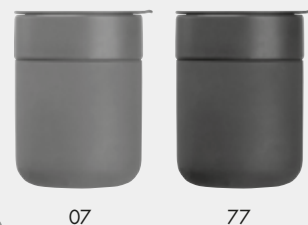
550 ml LEAKPROOF

84822

PET drinking bottle with bamboo lid, 500ml

PET drinking bottle with bamboo lid and a capacity of 500ml. The logo is engraved on the lid.

✂ 6,5 × 21,5 cm | ✂ L3 3 | 田 K



84676

Ceramic drinking cup with silicone sleeve, 340ml

Ceramic drinking cup with silicone sleeve, drinking slide in the lid and 340ml capacity. We engrave your logo on the silicone sleeve.

✂ 8,2 × 10,8 cm | ✂ L3 4 × 4 | 田 K



03

06

07

DOUBLE-WALLED 80 ml EXPRESS

84425

Stainless steel espresso cup 80ml

Double-walled espresso cup made of stainless steel with a capacity of 80ml. We will engrave your logo on the cup.

5,5 x 4,2 cm | L3 3 x 3 | K



84610

Ice cube set in Bamboo case

Set consisting of 6 granite ice cubes, stainless steel tongs and a cotton bag delivered in a bamboo box. Perfect for chilling drinks without watering them down. We engrave your logo on the box.

13,3 x 8,3 x 3,5 cm | L3 8 x 5 | K



CrisMa® 500 ml

84622

Drinking cup with copper, 500ml

Stainless steel wine goblet with copper coating and a capacity of 500ml. Thanks to the copper coating, it keeps your drink chilled for a long time. We engrave your logo on the goblet.

8,5 x 22,5 cm | L3 4 x 4 | K



CrisMa® 300 ml

84946

Stainless steel glass with copper, 300ml

Stylish glass in the shape of a martini glass with a copper coating and a capacity of 300ml. We engrave your logo on the glass.

11,7 x 14,5 cm | L3 4 x 2 | K





94620

Mini flask in a shape of a key ring

Mini flask made of stainless steel in the shape of a key ring. Screw cap and 30ml capacity. We engrave your logo on the front.

✂ 3,9 × 2 × 6,3 cm | ☒ L2 2 × 2 | ☐ K



CrisMa®

☐ 500 ml ⚡ EXPRESS

84952

CrisMa cocktail shaker with copper, 500ml

Elegant cocktail shaker (500ml capacity) with a matt surface in a handy design made of stainless steel and copper coating. Perfect for your next cocktail evening. We engrave your logo on the shaker.

✂ 8 × 18,5 cm | ☒ L3 4 × 4 | ☐ K



⚡ EXPRESS

84705

Bamboo pizza cutter

Practical bamboo pizza cutter with ergonomic shape offers easy handling to get a nice, clean cut through your pizza. Stainless steel blade. We engrave your logo on the handle.

✂ 8,4 × 1,2 × 7,7 cm | ☒ L2 5 × 3 | ☐ K



54755

Non-woven children's cooking set (apron + hat)

Non-woven children's cooking set consisting of a practical chef's hat and matching apron. We print your logo on the apron.

✂ 27 × 4 × 20 cm | ☒ ST 20 × 15 | ☐ KS



CrisMa[®] ⚡ EXPRESS

84973

CrisMa copper pot with lid

Cooking pot made of stainless steel and copper coating with lid and two handles. Suitable for electric, gas and induction cookers. The copper coating guarantees the best heat conductivity and storage capacity. We engrave your logo on the lid.

✂️ ø 20,5 x 10,5 cm | 📏 L3 4 x 4 | 🏠 K



⚡ EXPRESS

84728

Silicone dough scraper with wooden handle

Silicone dough scraper with bamboo handle and stainless steel. The small eyelet at the end of the handle is used for practical hanging. We engrave your logo on the bamboo handle.

✂️ 33,5 x 5,3 x 2 cm | 📏 L2 6 x 1 | 🏠 N



CrisMa[®] ⚡ EXPRESS

84977

CrisMa copper frying pan with high rim

Stainless steel frying pan with copper coating and high rim. Suitable for electric, gas and induction hobs. The copper coating guarantees the best heat conductivity and storage capacity. We engrave your logo on the handle.

✂️ ø 28,5 x 5 cm | 📏 L3 4 x 3 | 🏠 K

CrisMa[®] ⚡ EXPRESS

84978

CrisMa copper pan

Stainless steel swivelling pan with copper coating. Suitable for electric, gas and induction hobs. The copper coating guarantees the best heat conductivity and storage capacity. We engrave your logo on the handle.

✂️ ø 28,5 x 7 cm | 📏 L3 4 x 3 | 🏠 K



⚡ EXPRESS

84731

Cheese grater

Stainless steel parmesan grater with wooden handle. We engrave your logo on the handle.

✂ 23,2 × 5,8 × 2,3 cm | ☒ L2 4 × 1 | ☐ KS



♻ RECYCLED

65262

Foldable shopping bag

Shopping bag made of recycled cotton and polyester with a gram-mage of 118 g/m². The bag can be folded up to save space. We print your logo on one side.

✂ 37 × 0,3 × 37 cm | ☒ ST2 26 × 27 | ☐ N



84748

Cardboard knife

Cardboard knife with bamboo handle and detachable locking blade. We engrave your logo imprint on the bamboo surface.

✂ 13 × 0,6 × 1,9 cm | ☒ L1 5 × 1 | ☐ KS



CrisMa®

94979

CrisMa 15-piece multitool

CrisMa 15-piece multifunctional tool made of stainless steel and various tools such as pliers, knife, saw, scissors, screwdriver etc. and practical clip for attaching to the belt. This item is supplied in a black box. Your logo will be engraved on the handle.

✂ 16,2 × 2,2 × 5,7 cm | ☒ L2 2 × 0,5 | ☐ K



⚡ EXPRESS

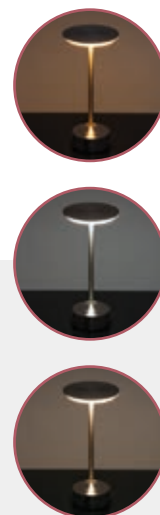
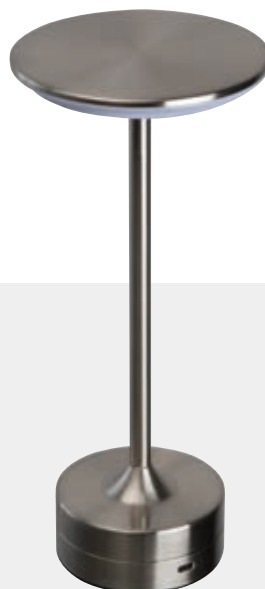
❶ TYPE C CABLE INCL. 🔋 RECHARGEABLE 🔋 1 200 mAh

94997

Stainless steel table lamp

Stainless steel table lamp in the shape of a mushroom with rechargeable battery (1200 mAh output) and 20 LEDs. The lamp is infinitely dimmable and the light colour can be changed between warm, cold and natural light. Incl. C-type charging cable. We engrave your logo on the base of the lamp.

✂ 10 × 10 × 18 cm | ☒ L3 3 × 2 | ☒ K



⚡ EXPRESS

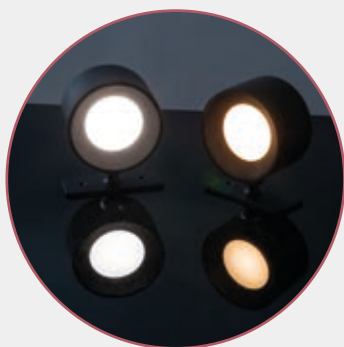
❶ TYPE C CABLE INCL. 🔋 RECHARGEABLE 🔋 800 mAh

95181

Stainless steel table lamp

Stainless steel table lamp with rechargeable battery (800 mAh power). The lamp is dimmable and the light colour can be changed between warm and white light. Includes C-type charging cable. We engrave your logo on the base of the lamp.

✂ 12,8 × 28 cm | ☒ L3 3 × 1 | ☒ K



⚡ EXPRESS

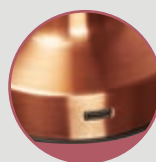
❶ TYPE C CABLE INCL. 🔋 RECHARGEABLE 🔋 1 200 mAh

94880

CrisMa rechargeable wall lamps set of 2

Set of 2 fashionable rechargeable wall lamps with 24 LEDs dimmable in 3 brightness levels and choice between warm and cool light. The rechargeable battery has a capacity of 1200 mAh and a maximum runtime of 18 hours. Incl. C-type charging cable with which both lamps can be charged. We engrave your logo on both lamps (engraving price for both lamps).

✂ 8,5 × 4,5 × 9,5 cm | ☒ L8 3 × 3 | ☒ K



⚡ EXPRESS

❶ TYPE C CABLE INCL. 🔋 RECHARGEABLE 🔋 800 mAh

94662

Stainless steel table lamp with rechargeable battery

Fashionable table lamp (800mAh) made of stainless steel with rechargeable battery (type C). The light colour is dimmable and the light colour can be changed between warm and white light. We engrave your logo on the base of the lamp.

✂ 8,9 × 20,8 cm | ☒ L3 3 × 5 | ☒ K

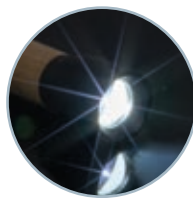


94894

41-piece tool set incl. ratchet

41-piece tool set incl. ratchet and a practical storage case. Your logo will be printed on the lid.

✂ 17,8 × 9,6 × 3,4 cm | 📦 T3 5 × 3 | 🏠 KS



⚡ EXPRESS

♻ RECYCLED

🔋 RECHARGEABLE

📌 TYPE C CABLE INCL.

95182

Bamboo torch

Rechargeable torch made from recycled aluminium with bamboo handle with 400 lumen brightness and a battery capacity of 300 mAh. Type C charging cable included. We will engrave your logo on the bamboo handle.

✂ ø 3,3 × 11,5 cm | 📦 L2 4 × 1 | 🏠 K



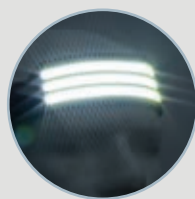
03

04

05

07

09



⚡ EXPRESS

📌 COB LIGHT

🔋 RECHARGEABLE

📌 TYPE C CABLE INCL.

94855

Headlamp with COB lights

COB headlamp with 400 lumen luminosity made of silicone with many lighting functions with three COB lights and a type 303 bulb. Rechargeable with subsequent operating time of up to 3 hours (battery power: 800mAh). Your logo will be engraved on the silicone part.

✂ 8,5 × 2,8 × 3 cm | 📦 L3 3 × 2 | 🏠 K



♻ RECYCLED

⚡ EXPRESS

94937

Key ring metal plate

Stylish key fob made from recycled aluminium in the fashionable design of a dog tag. We engrave your logo on the metal plate.

✂ 4,8 × 2,9 × 0,2 cm | 📦 L2 3 × 3 | 🏠 KS



① 3 m

94629

Steel tape measure with plastic housing 3m

Solid steel tape measure, 3m running length with robust plastic casing, large digits, permanent stopper and practical nylon wrist strap. We print your logo on the measure tape.

✂ 5 × 2,5 × 5 cm | ☒ T3 ø 2,5 | ☐ K



① 5 m

94625

Steel tape measure with plastic housing 5m

Solid steel tape measure, 5m running length with robust plastic casing, large digits, permanent stopper and practical nylon wrist strap. We will print your logo on measure tape.

✂ 6 × 3,6 × 6 cm | ☒ T3 ø 3 | ☐ K



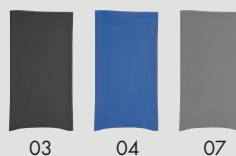
⚡ EXPRESS

94727

Bamboo key ring with bottle opener

Bamboo key ring with the practical function of a bottle opener. Your logo will be engraved on the bamboo surface.

✂ 9,4 × 3 × 0,3 cm | ☒ L2 3 × 2 | ☐ KS



94939

Bandana loop scarf

Fashionable loop scarf (120 g/m²) in the shape of a circle and without ends. Easy to use as it can be quickly pulled over the head. No need to constantly rewrap and fasten. Your logo is applied to one part of the scarf.

✂ 48 × 25,5 cm | ☒ TT2 8 × 8 | ☐ N

CERTIFIED SUPPLY CHAIN



STANDARD
100
19.0.79660
Hohenstein HT1
www.oeko-tex.com

